



DEKALB



2023 COLLECTION

ABOUT US:

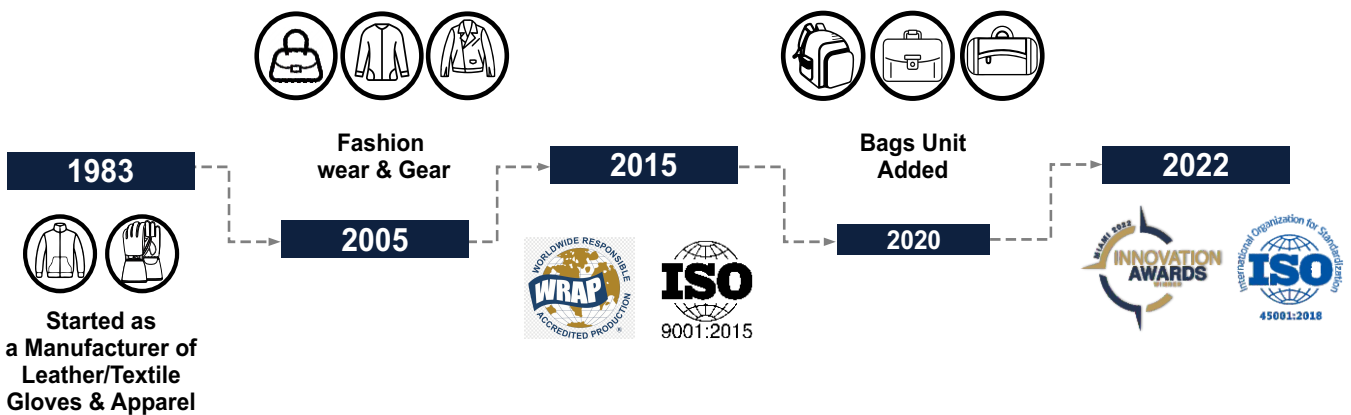
Dekalb Trade Voice is a Manufacturer of Apparel, Bags and Accessories. We strive to put customer Satisfaction as our top priority, and we are always looking for ways to improve and enhance our products and services.

We are committed to providing an innovative and sustainable approach to manufacturing that meets the needs of our customers. We also prioritize the safety and well-being being of our employees and actively promote a culture of respect and inclusiveness, Our production factory is proudly family-owned and operated, and we have been serving our community for over 35 years.

In addition to delivering enduring style and quality, Dekalb is committed to the constant development of the ethical and sustainable management of its operations. These standards start with the choice and traceability of raw materials through to the production, all the way to our customer.

Dekalb Trade Voice
Chief Executive

JOURNEY



OUR CERTIFICATIONS



ENVIRONMENTS



SUSTAINABILITY



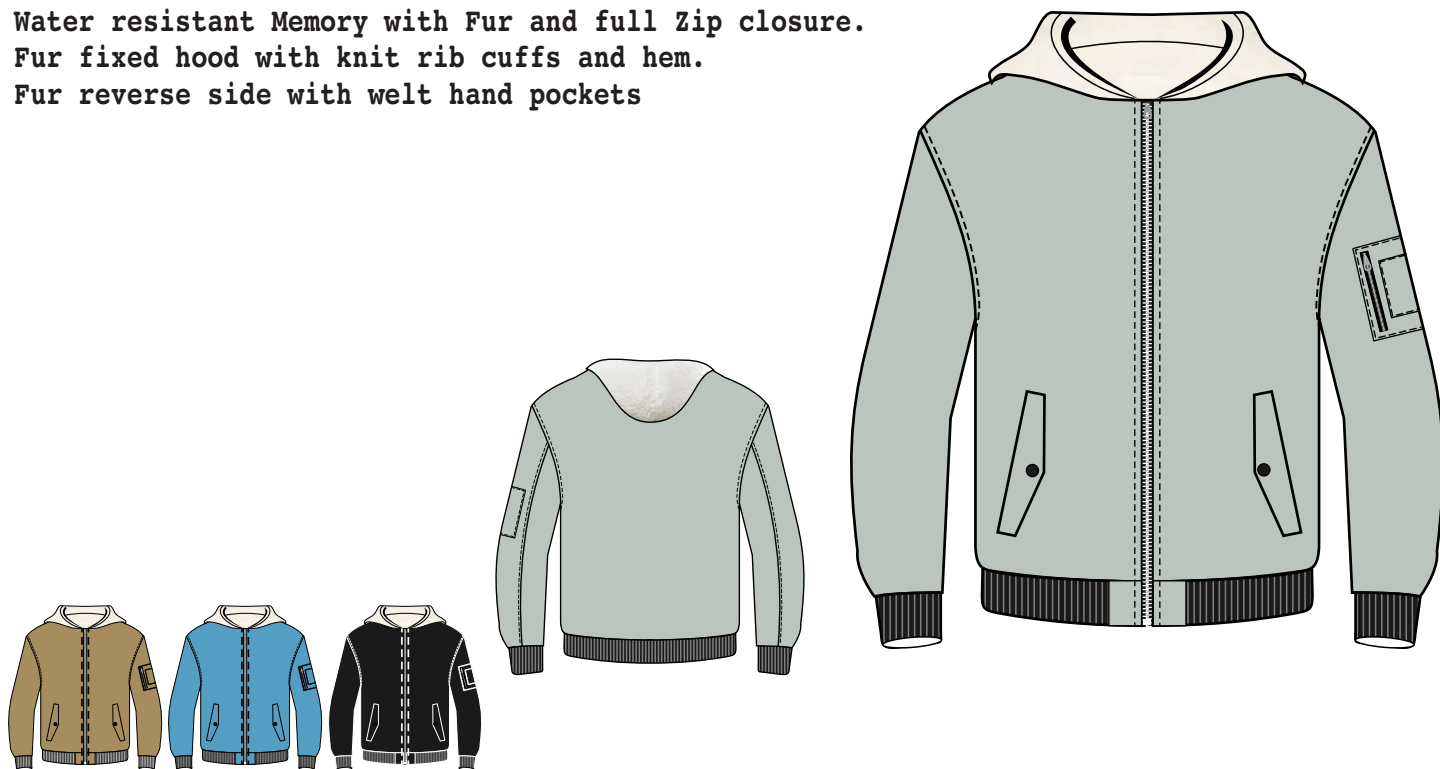
Art # 2270 - Jacket

MATERIAL SPEC :

Water resistant Memory with Fur and full Zip closure.

Fur fixed hood with knit rib cuffs and hem.

Fur reverse side with welt hand pockets



Art # 2271 - Shirt with Hood

MATERIAL SPEC :

Cotton Flannel Fabric light Weight.

Fixed hood with knit Fleece.

Front Chest Pockets with hand buttons.



Art # 2271 - Shirt

MATERIAL SPEC :

Cotton Flannel Fabric light Weight.
Front Chest Pockets with hand buttons



Art # 2291 - Denim Jacket

MATERIAL SPEC :

Cotton Twill Fabric. Fixed Collar with
knit Corduroy. Front Pocket with zip



Art # 2284 - Jacket

MATERIAL SPEC :

Wool with Poly Fur
Quilted Polyester Lining



Art # 2285 - Jacket

MATERIAL SPEC :

Polyester Bubble Fabric
100grm Faber Flat Lining

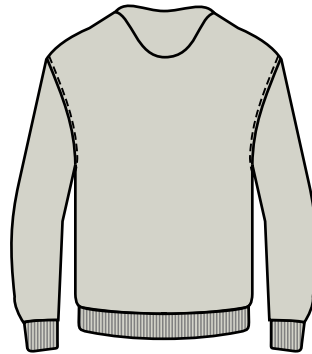


Art # 2339 - Hoodie

MATERIAL SPEC :

Fleece hoodie.

With cuff and bottom Rib

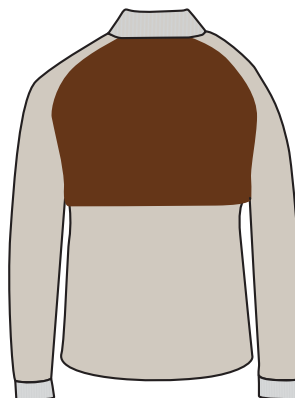


Art # 2355 - Jacket

MATERIAL SPEC :

Polyester Bubble Fabric

Nylon Bubble Fabric Lining

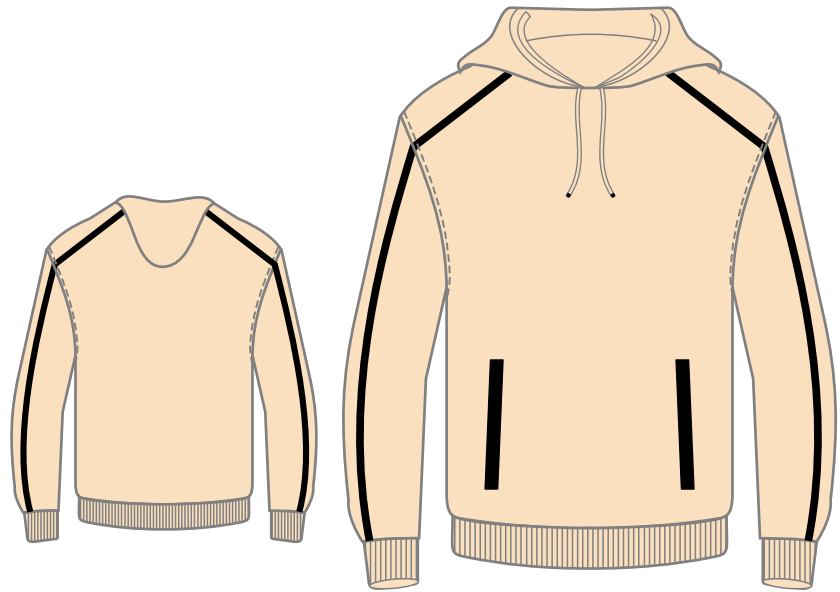


Art # 2234 - Hoodie

MATERIAL SPEC :

Fleece hoodie.

With cuff and bottom Rib



Art # 2235 - Jacket

MATERIAL SPEC :

100% POLYAMIDE

LINING 100% VISCOSE

CLASSIC FIT



Art # 2236 - Jacket

MATERIAL SPEC :

100% POLYESTER

LINING 54% CUPRO 46% VISCOSE

ZIP CLOSURE WITH TRIOMPHE ZIP PULLER



Art # 2267 - Jacket

MATERIAL SPEC :

100% POLYAMIDE

LINING 100% VISCOSE

CLASSIC FIT



Art # 2238- Jacket

MATERIAL SPEC :

100% POLYESTER

LINING 54% CUPRO 46% VISCOSE

ZIP CLOSURE WITH TRIOMPHE ZIP PULLER



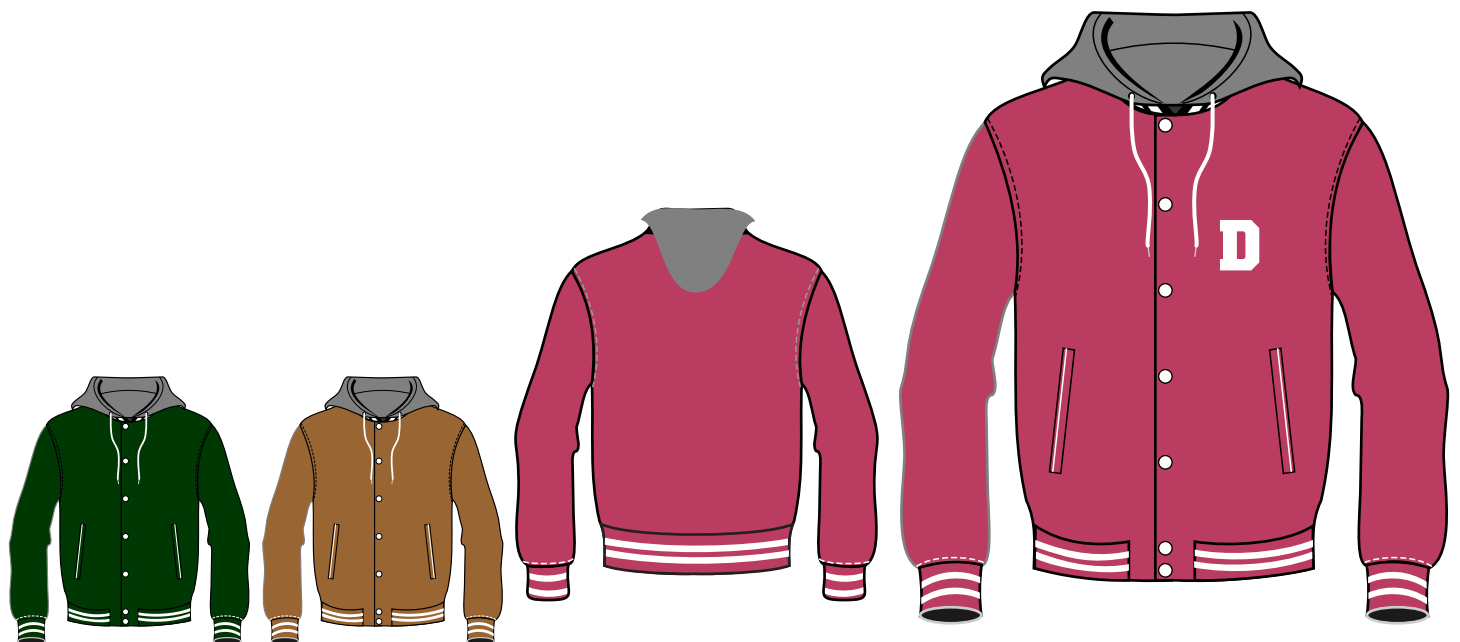
Art # 2239 - Jacket with Hoodie

MATERIAL SPEC :

100% POLYAMIDE

LINING 100% COTTON

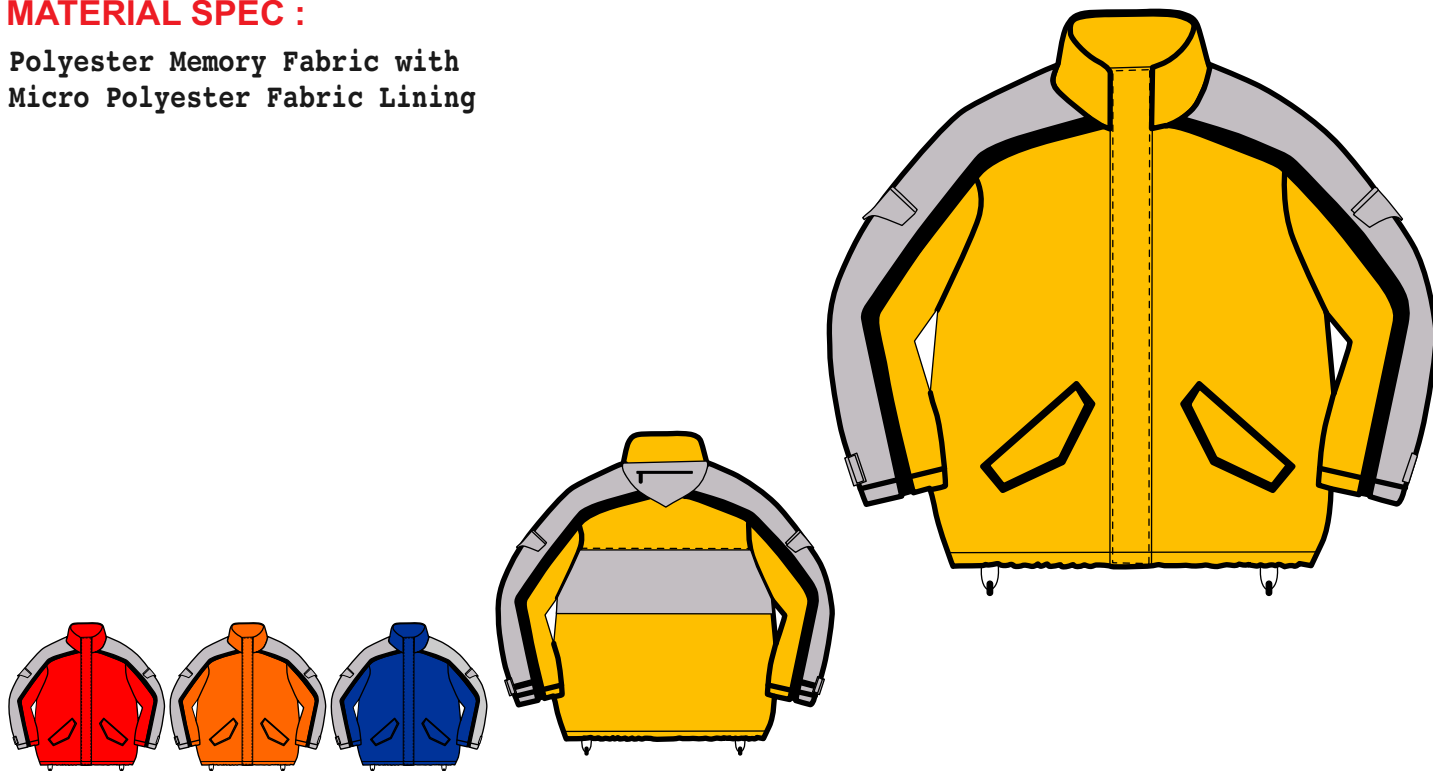
HOOD 100% COTTON



Art # 2356 - Jacket

MATERIAL SPEC :

Polyester Memory Fabric with
Micro Polyester Fabric Lining



Art # 2357 - Jacket

MATERIAL SPEC :

Double Face Sheep Leather with Fur
Front Opening Zip



Art # 2272 - Lady Jacket

MATERIAL SPEC :

Premium Quality Sheep Leather.
Full Zip closure. Saitan Lining



Art # 2277 - Lady Jacket

MATERIAL SPEC :

Premium Quality Sheep Rub-off Leather.
Full Snap Button Closure.
Lining: Beige Micro Fabric



Art # 2274 - Jacket

MATERIAL SPEC :

Premium Quality Sheep Dunlop Olive Leather
Front Snap Button Closure.



Art # 2275 - Jacket

MATERIAL SPEC :

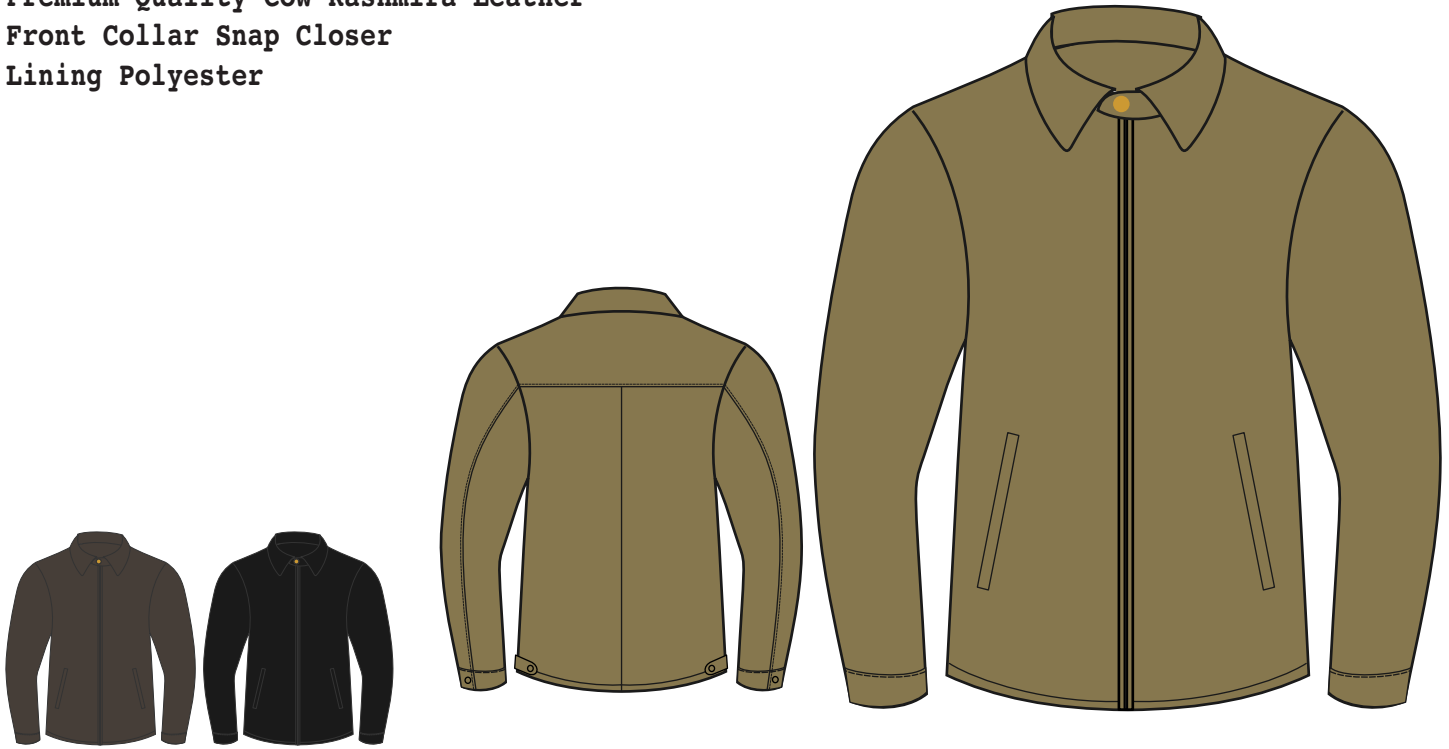
Premium Quality Cowhide Crispy Leather
Fur on collar Lining Polyester



Art # 2281 - Jacket

MATERIAL SPEC :

Premium Quality Cow Kashmira Leather
Front Collar Snap Closer
Lining Polyester



Art # 2273 - Jacket

MATERIAL SPEC :

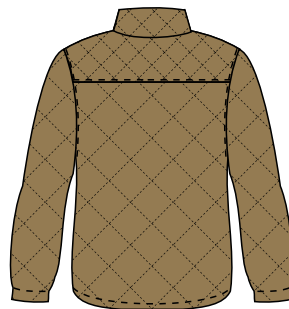
Premium Quality Cow Crispy Leather
with on collar Pasted Fur



Art # 2358 - Jacket

MATERIAL SPEC :

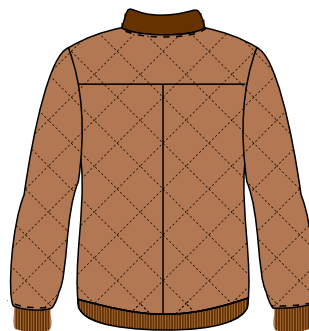
Premium Quality Cow Leather
Front Zipper
Lining Polyester



Art # 2359 - Jacket

MATERIAL SPEC :

Premium Quality Cow Leather
Front Zipper
Lining Polyester



Art # 2360 - Jacket

MATERIAL SPEC :

Premium Quality Cow Crispy Leather
Hide With Pasted Fur



Art # 2361 - Jacket

MATERIAL SPEC :

Premium Quality Sheep Nappa Leather
With Rib on bottom



Art # 2361 - Coat

MATERIAL SPEC :

Premium Quality Cow Leather
Front Zipper Closure.



Art # 2362 - Coat

MATERIAL SPEC :

Premium Quality Sheep Nappa Leather
With Polyester Liner



Art # 2278 - Lady Jacket

MATERIAL SPEC :

Premium Quality Sheep Leather & Leopard Sublimation poly fleece.

Polyester Micro Fabric Lining



Art # 2280 - Lady Jacket

MATERIAL SPEC :

White Fur With Premium Quality Sheep
Leather Patches.



Art # 2275 - Jacket

MATERIAL SPEC :

Premium Quality Cow Semi Aniline Hide
With detachable Fur lining



Art # 2281 - Lady Coat

MATERIAL SPEC :

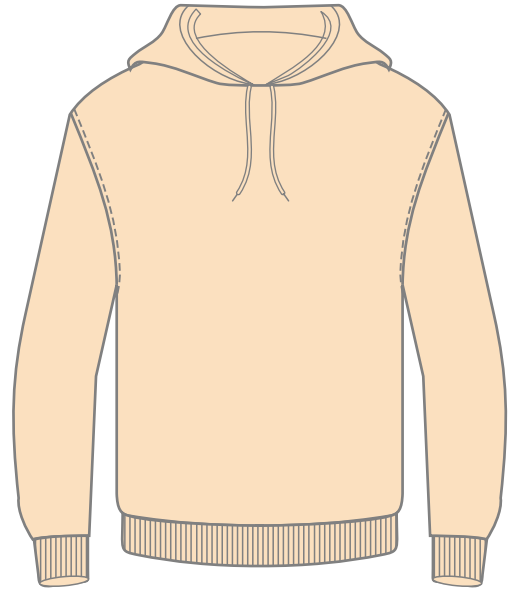
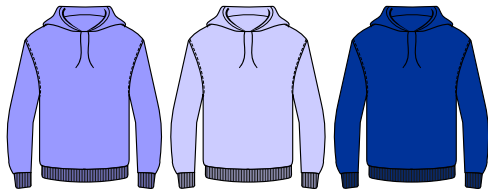
Premium Quality Sheep Nappa Leather
With Digital Printing On Sleeves.



Art # 2339 - Hoodie

MATERIAL SPEC :

Fleece hoodie.
With cuff and bottom Rib



Art # 2340 - Hoodie

MATERIAL SPEC :

Fleece hoodie.
With cuff and bottom Rib



Art # 2341 - Hoodie

MATERIAL SPEC :

Fleece Hoodie
With cuff and bottom Rib



Art # 2342 - Hoodie

MATERIAL SPEC :

Fleece tie dye hoodie.
With cuff and bottom Rib



Art # 2343 - Hoodie

MATERIAL SPEC :

Cotton Fleece heavy Weight.
With cuff and bottom Rib



Art # 2344 - Hoodie

MATERIAL SPEC :

Cotton Fleece heavy Weight.
With cuff and bottom Rib



Art # 2345 - Hoodie

MATERIAL SPEC :

Fleece hoodie Heavy Weight.
With cuff and bottom Rib



Art # 2346 - Hoodie

MATERIAL SPEC :

Fleece hoodie Heavy Weight.
with Sublimation
With cuff and bottom Rib



Art # 4523 - Men Jacket

MATERIAL SPEC :

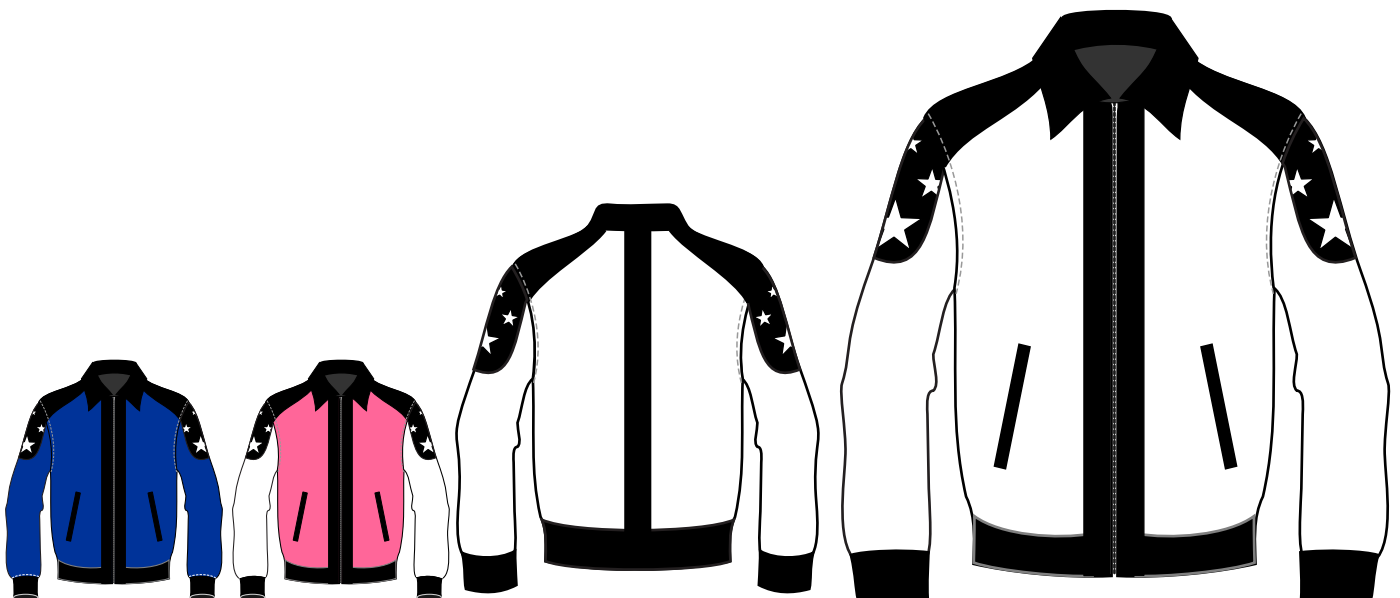
Leather / Wool Fabric Weight.
With cuff and bottom Rib.



Art # 4521 - Men Leather Jacket

MATERIAL SPEC :

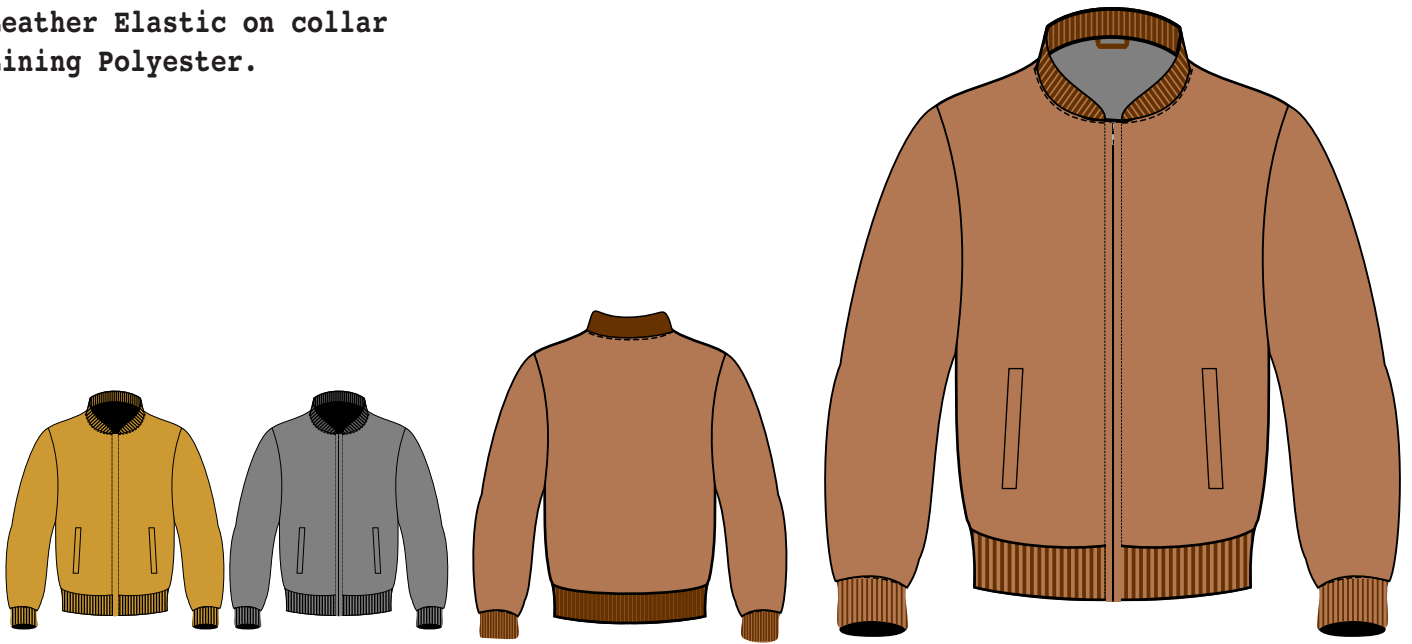
Cow Leather with Digital Sublimation
Open Front Zipper.



Art # 4525 - Men Jacket

MATERIAL SPEC :

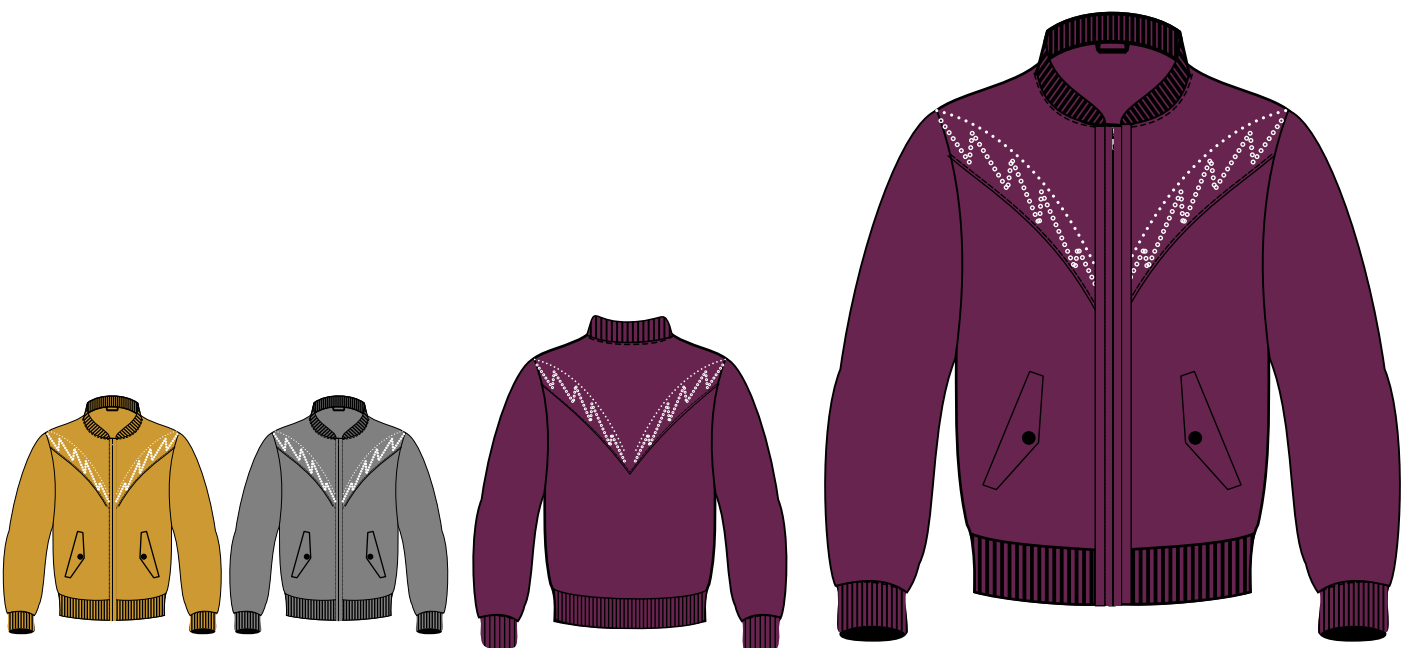
Premium Quality Cowhide Crispy Leather /
Leather Elastic on collar
Lining Polyester.



Art # 4526 - Men Jacket

MATERIAL SPEC :

100% NYLON 100% POLYESTER LINING
STUD AND SEQUIN EMBROIDERY
ON BACK AND FRONT CUTOUTS.



Art # 3901 - T-shirt

MATERIAL SPEC :

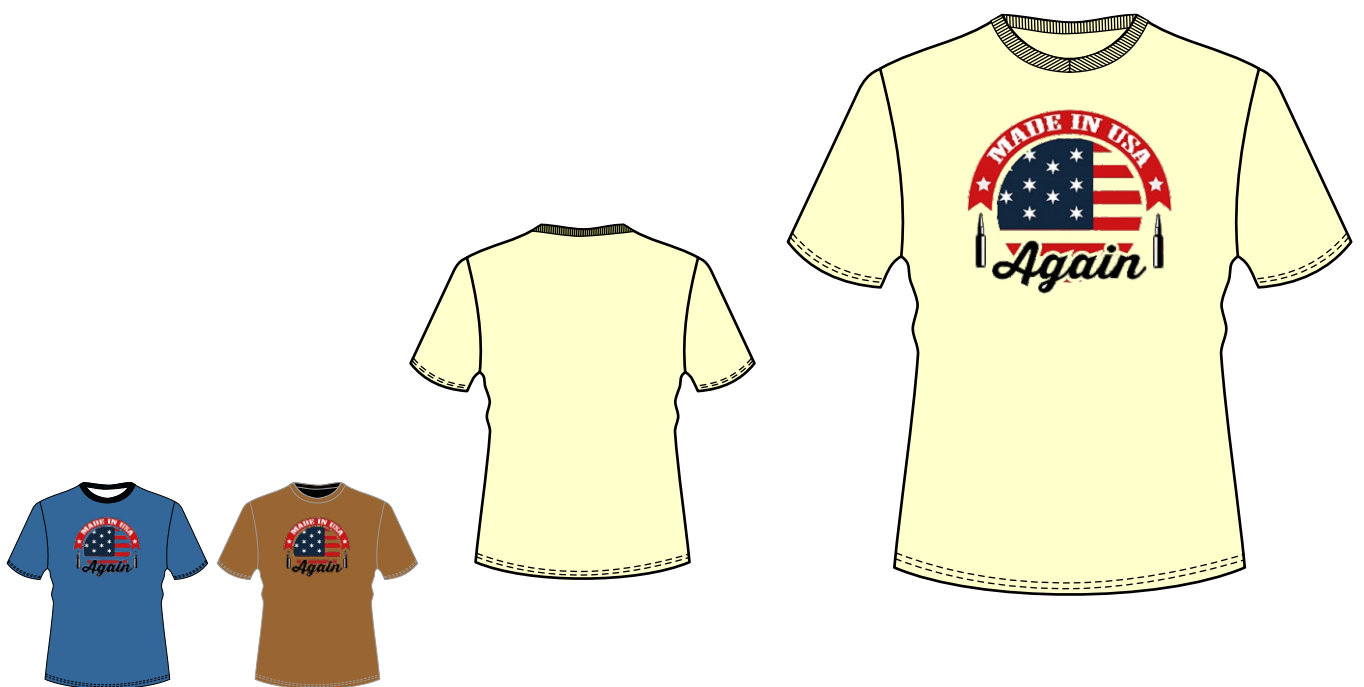
88% Cotton 12% Polyester Light Weight.



Art # 3902 - T-shirt

MATERIAL SPEC :

88% Cotton 12% Polyester Light Weight.



Art # 3903 - T-shirt

MATERIAL SPEC :

88% Cotton 12% Polyester Light Weight.



Art # 3904 - T-shirt

MATERIAL SPEC :

88% Cotton 12% Polyester Light Weight.



Art # 3905 - T-shirt

MATERIAL SPEC :

88% Cotton 12% Polyester Light Weight.



Art # 3906 - T-shirt

MATERIAL SPEC :

88% Cotton 12% Polyester Light Weight.



Art # 3907 - Sports Jersey

MATERIAL SPEC :

Polyester Mesh with sublimation Light Weight.



Art # 3908 - Sports Jersey

MATERIAL SPEC :

Polyester Mesh with sublimation Light Weight.



Art # 3909 - T-shirt

MATERIAL SPEC :

Cotton tie Dye Light Weight.



Art # 3910 - T-shirt

MATERIAL SPEC :

Cotton tie Dye Light Weight.



Art # 3911 - Sports Jersey

MATERIAL SPEC :

Polyester Mesh Light Weight
with sublimation design.



Art # 3912 - Sports Jersey

MATERIAL SPEC :

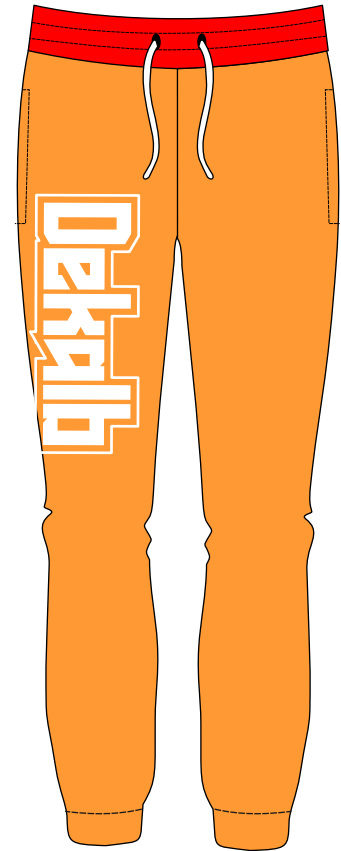
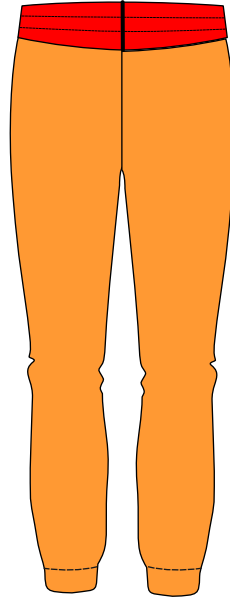
Polyester Mesh Light Weight
with sublimation design.



Art # 4002 - Men Sweat Pant

MATERIAL SPEC :

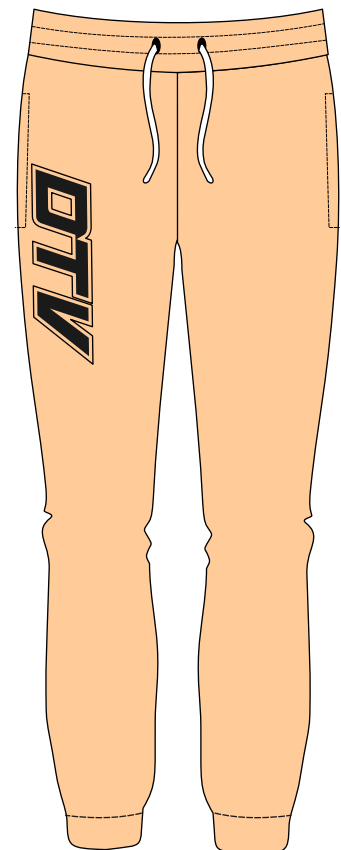
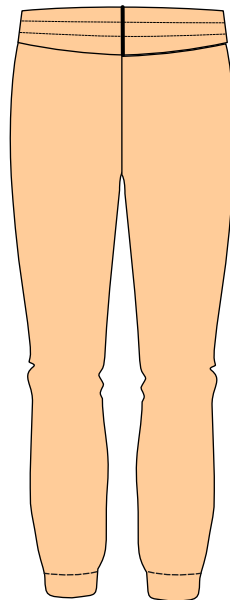
Half Dome Fleece Sweatpants



Art # 4003 - Men Sweat Pant

MATERIAL SPEC :

Half Dome Fleece Sweat pants.



Art # 4004 - Men Sweat Pant

MATERIAL SPEC :

Laycra Sweatpant with Sublimation



Art # 4005 - Men Sweat Pant

MATERIAL SPEC :

Laycra Sweat pant with Sublimation



Art # 4006 - Men Sweat Pant

MATERIAL SPEC :

Laycra Sweatpant with Sublimation



Art # 4007 - Men Sweat Pant

MATERIAL SPEC :

Laycra Sweatpant with Sublimation



Art # 4008 - Lady Sweat Pant

MATERIAL SPEC :

Laycra Sweatpant with Sublimation



Art # 4009 - Lady Sweat Pant

MATERIAL SPEC :

Laycra Sweatpant with Sublimation



Art # 4014 - Lady Sweat Pant

MATERIAL SPEC :

Laycra Sweatpant with Sublimation



Art # 4011 - Lady Sweat Pant

MATERIAL SPEC :

Laycra Sweatpant with Sublimation



Art # 4010 - Lady Sweat Pant

MATERIAL SPEC :

Fleece Sweatpant.



Art # 4012 - Lady Sweat Pant

MATERIAL SPEC :

Laycra Sweatpant with Sublimation





Art # 4018 - Shorts

MATERIAL SPEC :

Sublimated Polyester Laycra



Art # 4013 - Lady Sweat Pant

MATERIAL SPEC :

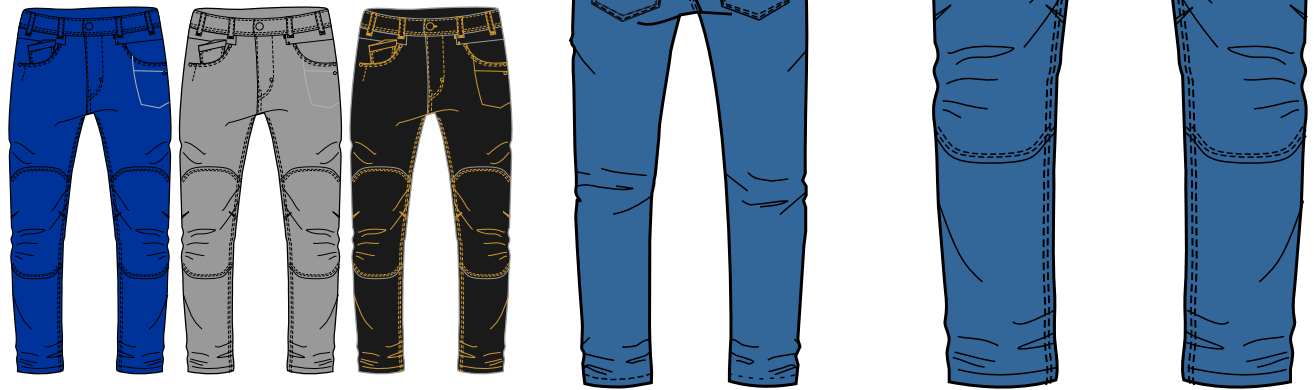
Laycra Sweatpant with Sublimation



Art # 3071 - Men Jeans

MATERIAL SPEC :

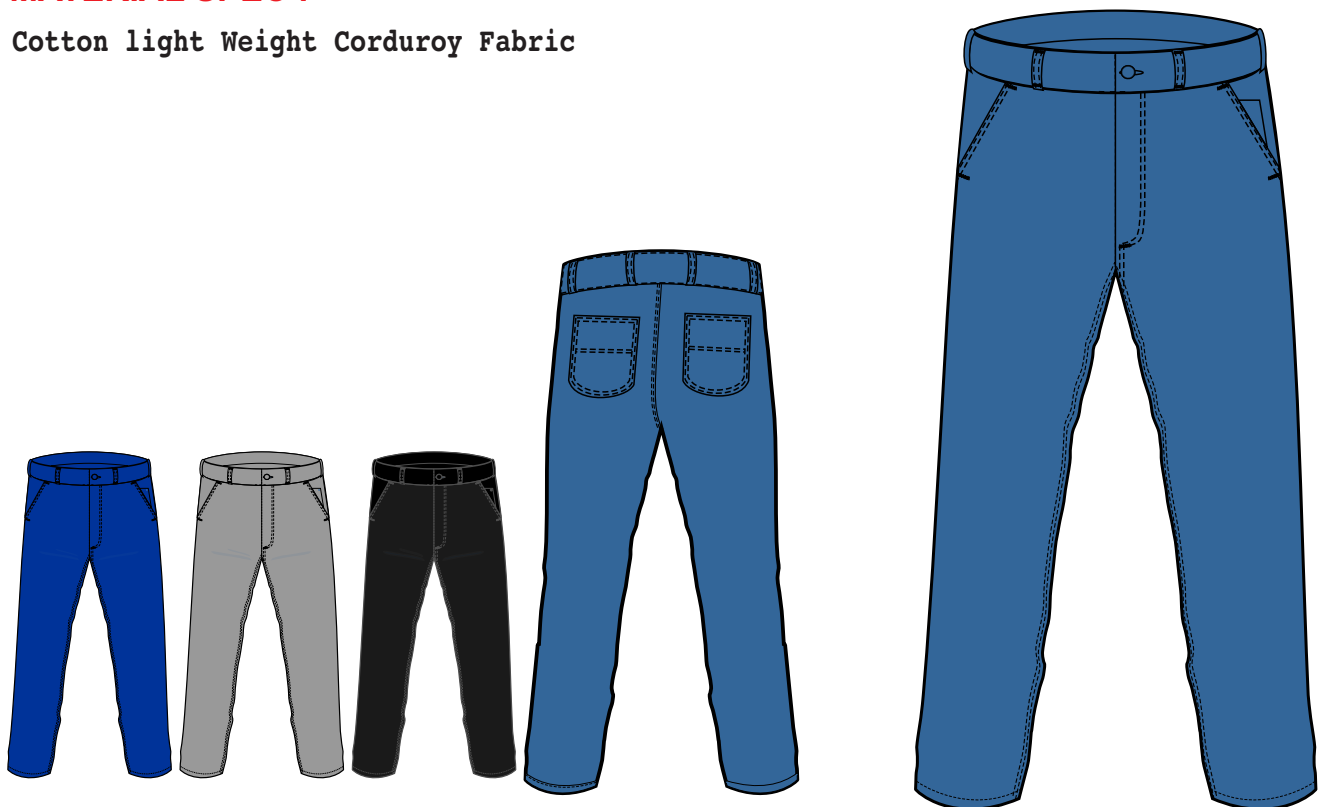
Cotton Jean light Weight Jean.



Art # 3072 - Men Jeans

MATERIAL SPEC :

Cotton light Weight Corduroy Fabric



Art # 7122 - Shirt

MATERIAL SPEC :

Cotton Fabric light Weight.
Front Chest Pockets with hand buttons



Art # 7123 - Shirt

MATERIAL SPEC :

Cotton Fabric light Weight.
Front Chest Pockets with hand buttons

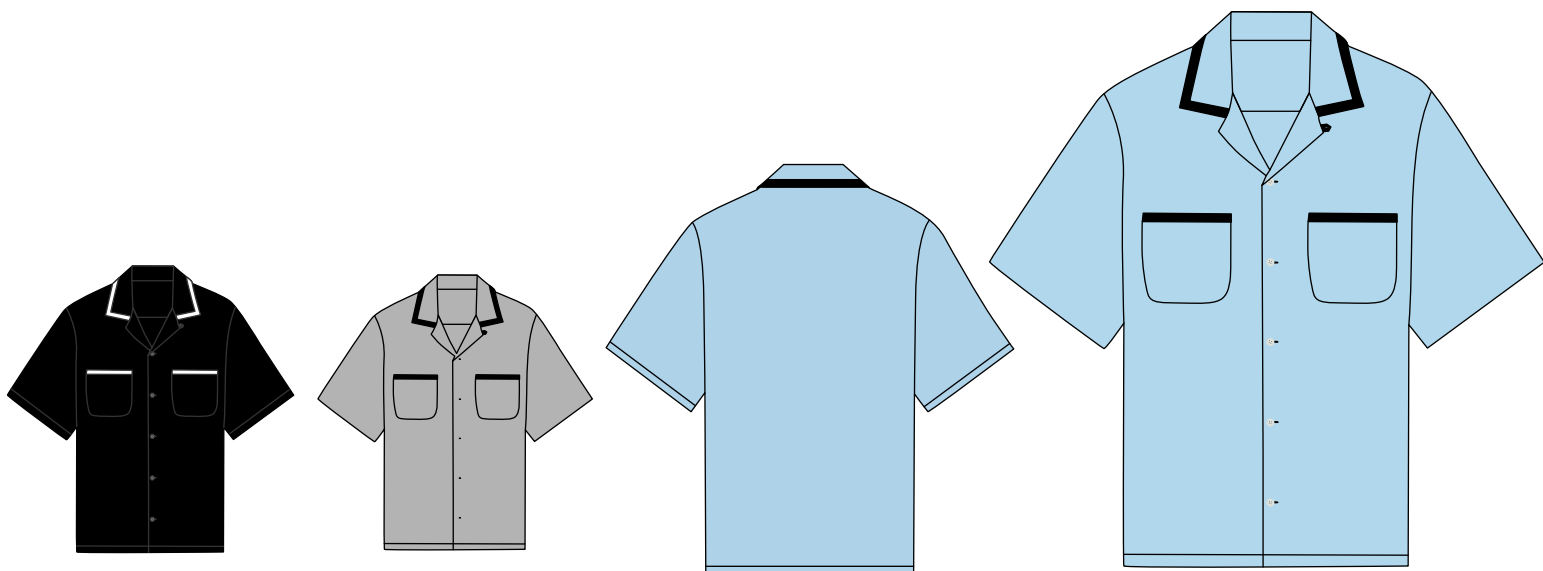




Art # 7123 - Shirt

MATERIAL SPEC :

Cotton Twill Button Up
Shirt.



Art # 7124 - Shirt

MATERIAL SPEC :

Round Neck Pullover Shirt.



Art # 7125 - Shirt

MATERIAL SPEC :

Rottery Print Round Neck
T-Shirt



Art # 7126 - Shirt

MATERIAL SPEC :

Polyester Jersey Sublimation.



Art # 2308 - Jacket

MATERIAL SPEC :

Cotton Denim and Fleece on Sleeve
Hood with draw Cord
with Knit rib cuffs and hem.
Front Button Closure.



Art # 2305 - Jacket

MATERIAL SPEC :

Knitted Fleece with Button Closure
with Knit rib cuffs and hem
Side with welt hand pockets.



Art # 2310 - Jacket

MATERIAL SPEC :

Memory Fabric with Rip Stop Lining
Knit rib cuffs and hem.
Front Zipper Closure
White Piping.



Art # 2313 - Jacket

MATERIAL SPEC :

Multi Shade Reflector Fabric
Knitted rib cuffs, Collar and hem.
Front Zipper Closure.



Art # 2307 - Hoodie

MATERIAL SPEC :

Knitted Poly Fur with Front Zip Closure
Hood with Draw Cord
Side with welt hand pockets.



Art # 7123 - Jacket

MATERIAL SPEC :

Cotton Fabric light Weight.
Front Chest Pockets with hand buttons



Art # 2309 - Hoodie

MATERIAL SPEC :

Nylon Suede Fabric with hood
Lining 100% Polyester Satin
Knit rib cuffs and hem.
Zipper on Front Closure
Reflector Piping.



Art # 2306 - Hoodie

MATERIAL SPEC :

Raglan Sleeve with Hood
Hood with Draw Cord Closure.
Kangaroo Pockets.



Art # 2314 - Sweatshirt

MATERIAL SPEC :

Knitted Cotton Fleece
Knitted rib Round Collar.



Art # 2316 - Sweatshirt

MATERIAL SPEC :

Knitted Cotton Fleece
Knitted rib Round Collar.



Art # 2315 - Sweatshirt

MATERIAL SPEC :

Knitted Cotton Fleece
Knitted rib Round Collar.



Art # 2311 - Jacket

MATERIAL SPEC :

Bubble Fabric with Fake Memory Lining
Button Front Closure
Two Side Pockets.



Art # 2378 - Jacket

MATERIAL SPEC :

Goat Veg Tanned Organic Leather
with Cotton Lining
Front Zipper Closure.



Art # 2318 - Jacket

MATERIAL SPEC :

Sheep Veg Tanned Organic Leather
with Polyester Lining
Front Zipper Closure.



Art # 2320 - Jacket

MATERIAL SPEC :

Cow Veg Tanned Organic Leather
with Polyester Lining
Front Zipper Closure.



Art # 2317 - Jacket

MATERIAL SPEC :

Premium Quality Maybal Italy apple BIO VEGAN Leather
with Satin Lining
Front Buttons Closure.



Art # 2319 - Jacket

MATERIAL SPEC :

Cow Veg Tanned Organic Leather
with Polyester Lining
Front Buttons Closure.



Art # 2324 - Jacket

MATERIAL SPEC :

Cow Veg Tanned Organic Crazy Brown Leather
with Polyester Lining
Front Buttons Closure.



Art # 2320 - Jacket

MATERIAL SPEC :

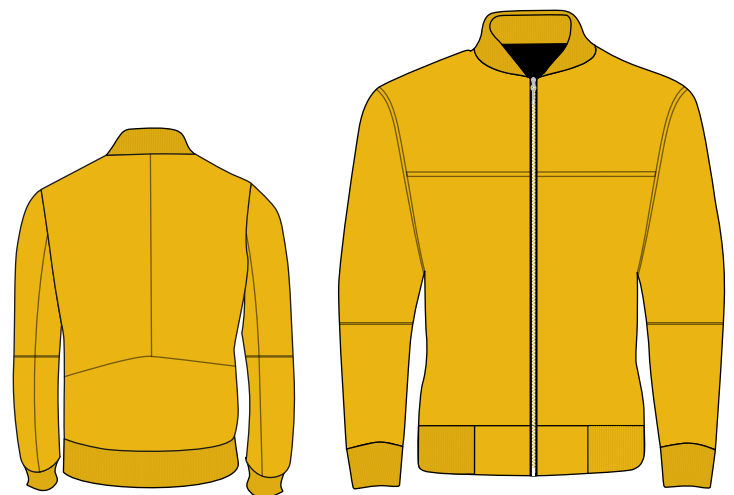
Cow Veg Tanned Organic Leather
with Polyester Lining
Front Buttons Closure.



Art # 2387 - Jacket

MATERIAL SPEC :

Sheep Veg Tanned Organic Leather
with Polyester Lining
Front Zip Closure.



Art # 2388 - Jacket

MATERIAL SPEC :

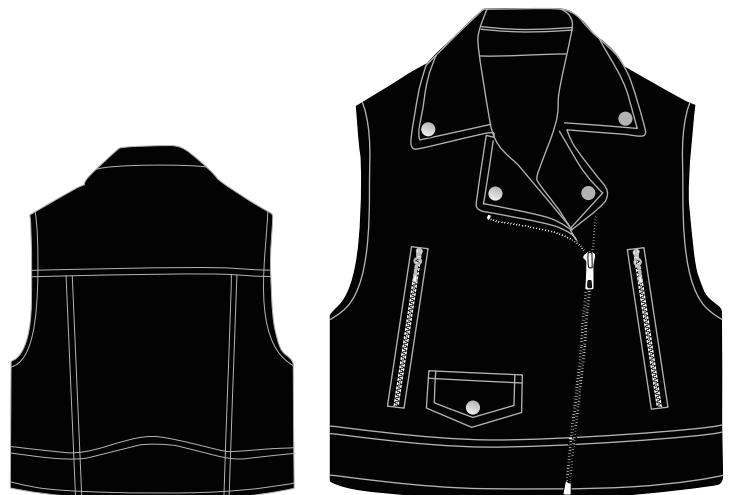
Sheep Veg Tanned Organic Leather
with Polyester Lining
Front Zip Closure.



Art # 2389 - Jacket

MATERIAL SPEC :

Cow Veg Tanned Organic Leather
with Polyester Lining
Front Zip Closure.



Art # 2390 - Jacket

MATERIAL SPEC :

Sheep Veg Tanned Organic Leather
with Polyester Lining
Front Zip Closure.



Art # 2391 - Jacket

MATERIAL SPEC :

Sheep Veg Tanned Organic Leather
with Polyester Lining
Front Zip Closure.



Art # 2392 - Jacket

MATERIAL SPEC :

Sheep Veg Tanned Organic Leather
with Polyester Lining
Front Zip Closure.



Art # 2393 - Jacket

MATERIAL SPEC :

Sheep Veg Tanned Organic Leather
with Polyester Lining
Front Buttons Closure.



Art # 2394 - Jacket

MATERIAL SPEC :

Sheep Veg Tanned Organic Leather
with Polyester Lining
Front Buttons Closure.



Art # 2395 - Jacket

MATERIAL SPEC :

Sheep Veg Tanned Organic Leather
with Fur & Polyester Lining
Front Zip Closure.



Art # 2395 - Jacket

MATERIAL SPEC :

Sheep Veg Tanned Organic Leather
with Polyester Lining
Front Buttons Closure.



Art # 2396 - Jacket

MATERIAL SPEC :

Cotton Fleece
with Knit rib cuffs and hem.
Front Button Closure.



Art # 3068 - Backpack Bag

MATERIAL SPEC :

100% RPET Polyester Oxford Fabric
Straight Shape Shoulder Straps
Front Zipper.



Art # 3067 - Backpack Bag

MATERIAL SPEC :

100% RPET Polyester Oxford Fabric
100% Mabel apple Sustainable Leather.
Curve Shape Shoulder Straps
Front Zipper.





Art # 3031 - Duffle Bag

MATERIAL SPEC :

Premium Cow Two tone Leather With Brass Material & Premium Lining.



Art # 3029 - Backpack Bag

MATERIAL SPEC :

Premium Cow Plain Leather With YKK Zip.



Art # 3032 - Bag

MATERIAL SPEC :

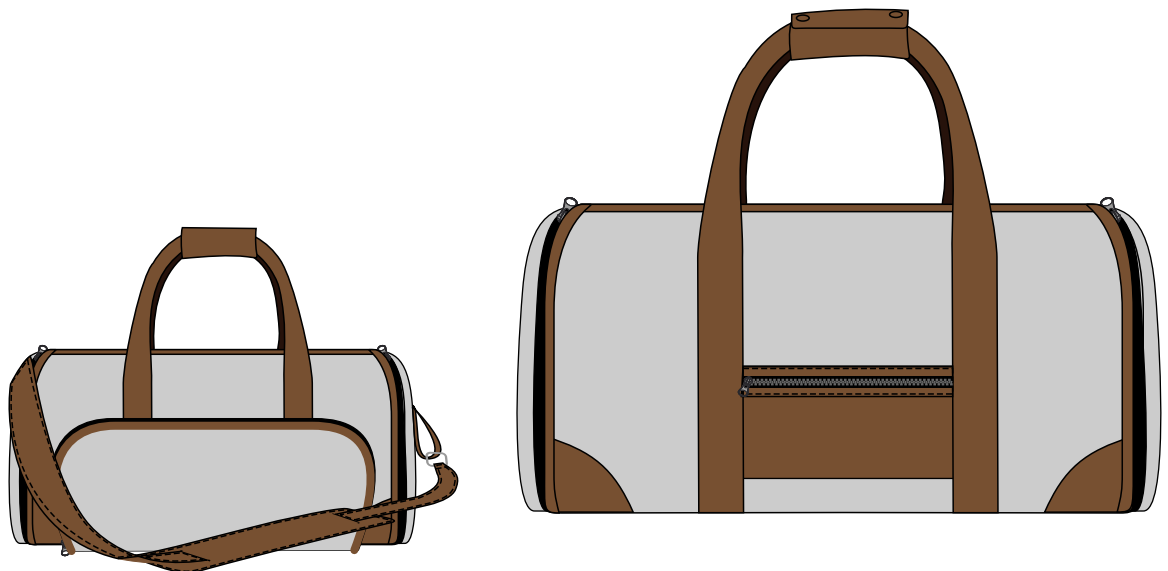
Premium Cow Plain Leather
With YKK Zip & Brass Material With
Premium Lining.



Art # 3067 - 3 in 1 Bag

MATERIAL SPEC :

100% RPET Polyester Oxford Fabric
100% Bio Vegan Leather.
3 in 1 Bag with Detachable Lining for Suits
Front Zipper.



Art # 3065 - Duffle Bag

MATERIAL SPEC :

Premium Cow Suede Leather

Lining Polyester

Front Zipper.



Art # 3066- Duffle Bag

MATERIAL SPEC :

50% Polyester 50% Nylon Velvet Suede Fabric

100% Bio Vegan Leather

Front Zipper.



Art # 3035 - Lady Bag

MATERIAL SPEC :

Premium Cow Plain Leather With Brass Material With Premium Leather.



Art # 3044 - Bag

MATERIAL SPEC :

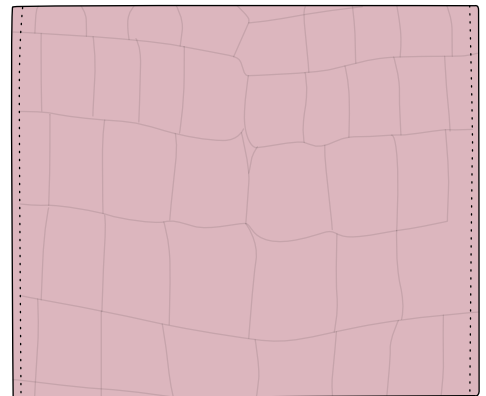
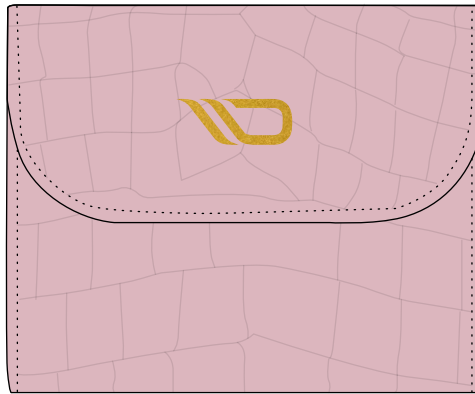
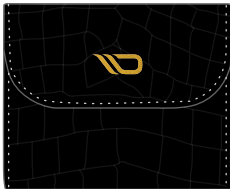
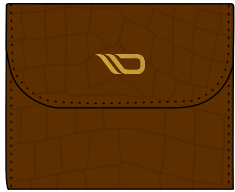
Premium Cow Plain Leather With Brass Material & Premium Lining.



Art # 3019 - Lady Bag

MATERIAL SPEC :

Premium Cow Plain Leather With
Printing logo.



Art # 3038 - Bag

MATERIAL SPEC :

Premium Cow Plain Leather with
YKK Zipper.



Art # 3020 - Lady Bag

MATERIAL SPEC :

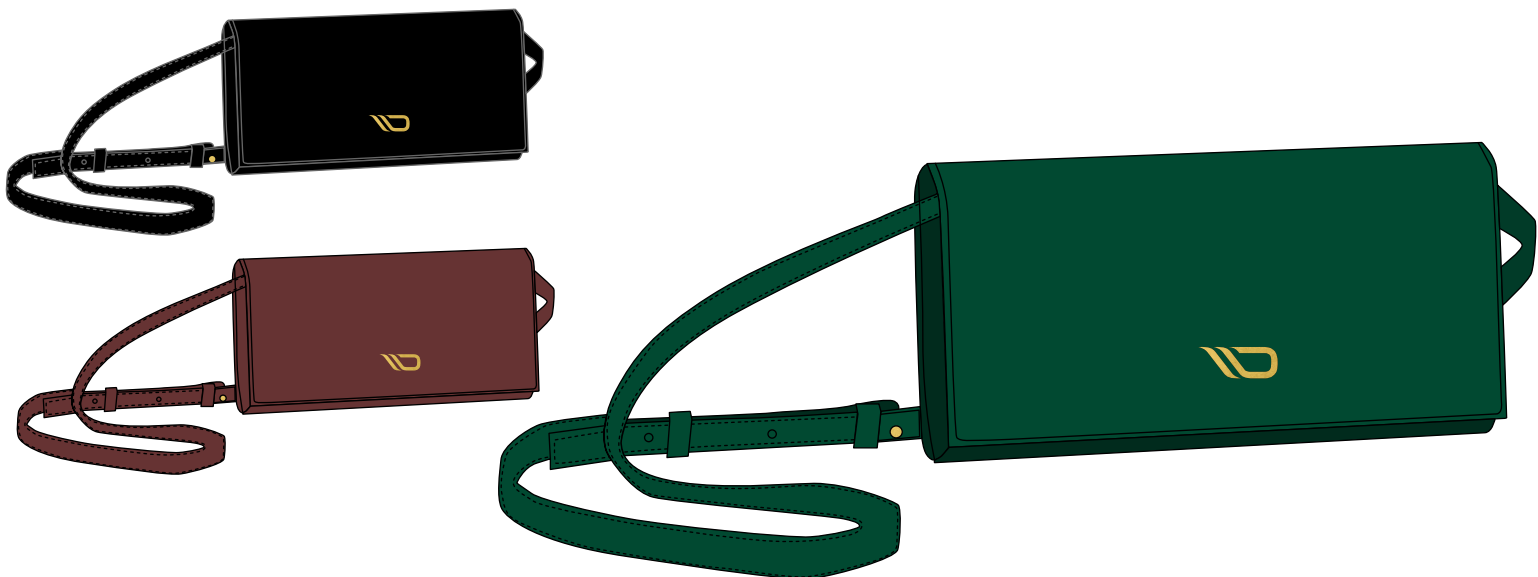
Premium Cow Plain Leather With Brass Material.



Art # 3056 - Bag

MATERIAL SPEC :

Premium Cow Plain Leather With Brass Material.



Art # 3057 - Lady Bag

MATERIAL SPEC :

Premium Cow Plain Leather With Gold Coated Material.



Art # 3055 - Bag

MATERIAL SPEC :

Premium Cow Plain Leather With Brass Material.



Art # 3054 - Lady Bag

MATERIAL SPEC :

Premium Cow Plain Leather With Cotton Canvas.



Art # 3059 - Bag

MATERIAL SPEC :

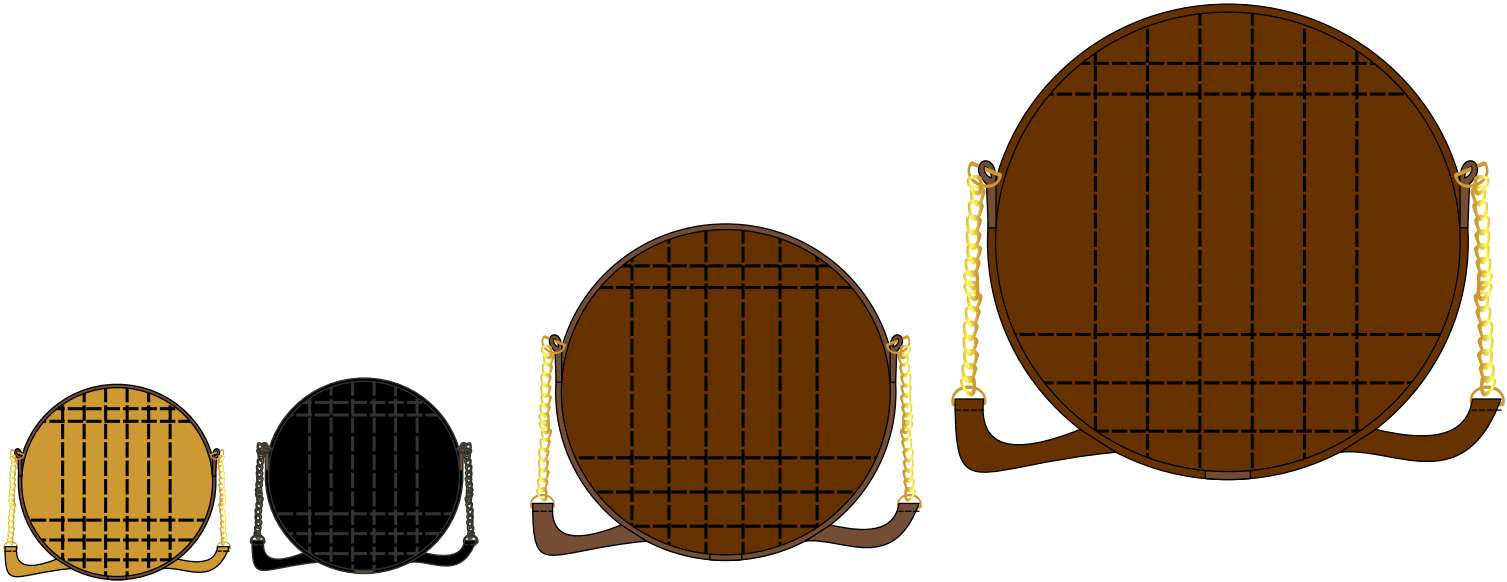
Premium Cow Plain Leather with YKK Zipper.



Art # 3060 - Lady Bag

MATERIAL SPEC :

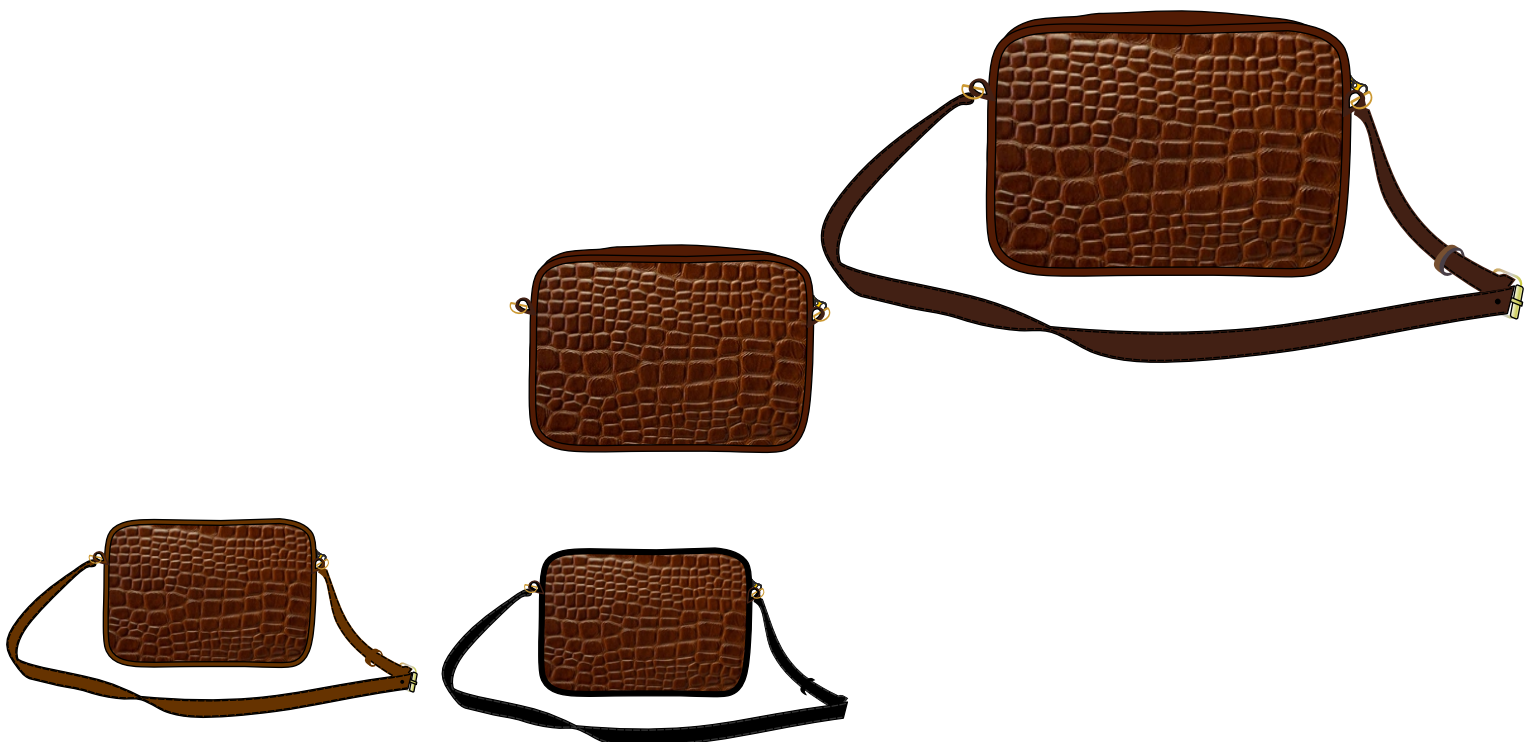
Premium Cow Plain Leather With Gold Coated Material.



Art # 3061 - Bag

MATERIAL SPEC :

Premium Cow Plain Leather With Gold Coated Material.



Art # 3062 - Lady Bag

MATERIAL SPEC :

Premium Cow Plain Leather With Brass Material & YKK Zipper.



Art # 3063 - Bag

MATERIAL SPEC :

Premium Cow Twotone Leather With Gold Coated Material.





USA Office:-

📍 1023 Lisa Lane, Easton, PA 18045

+1(210)375-0456 +1(201)887-9540

✉️ musa@dekalb.com.pk ✉️ masab@dekalb.com.pk

🌐 www.dekalb.com.pk

Head Office:-

📍 Seminar Road, Neka Pura Sialkot 51310 Pakistan

☎️ +92-52-3544333 +92-52-3523056

✉️ info@dekalbind.com 🌐 www.dekalbind.com